

National Association of State EMS Officials

2008 Annual Meeting Program



Hotel Murano and Bicentennial Pavilion
Tacoma, Washington

| SUNDAY, September 21, 2008 | |
|---|---|
| (Early arrivals for the "Leadership Skills Workshop." Experienced state officials are encouraged to participate as well as those new to their positions!) | |
| 1:00 pm to 6:00 pm Pavilion Rotunda | Registration |
| 1:30 pm to 6:00 pm Pavilion Room C | Leadership Skills for State EMS Officials |
| MONDAY, September 22, 2008 | |
| 8:00 am to 4:00 pm Pavilion Rotunda | Registration |
| 8:30 am to 3:30 pm Pavilion Room C | Leadership Skills for State EMS Officials |
| 8:30 am to 4:00 pm Pavilion Room B | Medical Directors Meeting, Part 1 |
| 3:30 pm to 4:30 pm Pavilion Room F | Executive Committee Meeting <i>Refreshments Sponsored by Jones & Bartlett Publishers</i> |
| 4:45 pm Hotel Lobby | Board Buses for Optional Social Event—Seattle Space Needle Go from 0 to "Wow" in 41 seconds. 10 seconds: see the sparkling waters of Puget Sound. 20 seconds: Mt. Rainier becomes a huge snow cone. 30 seconds: skyscrapers appear like giant Legos. 41 seconds: you're up saying "Ohhhhhhhh" on the O Deck. Tour ticket and dinner is included. Cash bar provided. Cost is \$70 per person. <i>Transportation and Refreshments En Route Sponsored by AMR Northwest Division</i> |

TUESDAY, September 23, 2008

| | |
|--|---|
| 7:30 am to 5:00 pm Pavilion Rotunda | Registration |
| 8:30 am to 3:00 pm Turcello/Burano (Hotel) | Medical Directors Meeting, Part 2 |
| 8:30 am to 3:30 pm Pavilion Room A | Data Managers Council Meeting, Part 1 |
| 8:30 am to 3:30 pm Pavilion Room B/C | Trauma Managers Council Meeting, Part 1 |
| 10:00 am to 3:30 pm Venice 1 (Hotel) | Rural EMS Issues Committee Meeting |
| 10:00 am to 3:30 pm Venice 2 (Hotel) | Training Coordinators Council Meeting, Part 1 |
| 10:00 am to 3:30 pm Venice 3 (Hotel) | Domestic Preparedness Committee Meeting |
| 10:00 am to 3:30 pm Venice 4 (Hotel) | EMSC Coordinators Council Meeting, Part 1 |
| 3:30 pm to 5:30 pm | NASEMSO Regional Meetings All state EMS officials who are members of NASEMSO are encouraged to participate. This includes state EMS directors, trauma managers, medical directors, data managers, training coordinators and others. Check at the registration desk to verify membership status. |
| Turcello/Burano (Hotel) | East Connecticut, Delaware, Washington, D.C., Maine, Maryland, Massachusetts, New Hampshire, New Jersey, New York, North Carolina, Ohio, Pennsylvania, Rhode Island, South Carolina, Vermont, Virginia, West Virginia |
| Venice 3 (Hotel) | South Central Alabama, Arkansas, Florida, Georgia, Louisiana, Mississippi, Oklahoma, Puerto Rico, Tennessee, Texas, Virgin Islands |
| Venice 4 (Hotel) | North Central Illinois, Indiana, Iowa, Kansas, Kentucky, Michigan, Minnesota, Missouri, Nebraska, North Dakota, South Dakota, Wisconsin |
| Cavallino (Hotel) | West Alaska, American Samoa, Arizona, California, Colorado, Guam, Hawaii, Idaho, Montana, Nevada, New Mexico, Oregon, Utah, Washington, Wyoming |
| 4:30 pm to 6:30 pm Lido Boardroom | Implementation Work Group for EMS Education Agenda Committee Members Only |
| 5:30 pm to 7:00 pm Pavilion D-E-F | EXHIBITS OPEN Social Mixer in the Exhibit Area <i>Sponsored by Cardiac Science Corporation</i> |
| 8:00 pm to 10:00 pm Turcello/Burano (Hotel) | NASEMSO Hospitality <i>Sponsored by Air Evac Lifeteam</i> |

WEDNESDAY, September, 24, 2008

| | |
|--|---|
| | Breakfast On Your Own |
| 7:00 am to 8:00 am Pavilion Room C | <p>American Heart Association Invitational Breakfast (State EMS Medical Directors and Training Coordinators or Appointed Designee only) This breakfast session will provide State EMS Medical Directors and Training Coordinators an opportunity to discuss the impact that changes to the 2010 Guidelines for CPR and ECC may have on establishing protocols and standards for patient care. It is critical that AHA receives your input because you play critical roles in setting regulations, standards, and practice guidelines intended to improve patient outcomes in your state. <i>Sponsored by the American Heart Association</i></p> |
| 7:00 am to 5:00 pm Pavilion Rotunda | Registration |
| 8:00 am to 8:45 am Pavilion Rooms A-B | <p>Government Affairs Committee Meeting <i>Lisa Meyer, Cornerstone Government Affairs</i></p> |
| 8:45 am to 9:30 am Pavilion Rooms A-B | <p>Official 2008 NASEMSO Annual Meeting Call to Order</p> <ul style="list-style-type: none"> 🚩 Color Guard and Pledge to Allegiance 🚩 President's Welcome 🚩 Moment of Silence 🚩 Welcome from Host 🚩 Nominating Committee Report |
| 9:30 am to 10:15 am Pavilion D-E-F | <p>EXHIBITS OPEN Break in Exhibit Area</p> |
| 10:15 am to 4:30 pm Turcello/Burano (Hotel) | <p>Medical Directors Council Meeting, Part 3 Breaks and Lunch per NASEMSO Meeting Program</p> |
| 10:15 am to 4:30 pm Venice 1 (Hotel) | <p>Data Managers Council Meeting, Part 2 Breaks and Lunch per NASEMSO Meeting Program</p> |
| 10:15 am to 4:30 pm Venice 2 (Hotel) | <p>Training Coordinators Council Meeting, Part 2 Breaks and Lunch per NASEMSO Meeting Program</p> |
| 10:15 am to 4:30 pm Venice 3 (Hotel) | <p>Trauma Managers Council Meeting, Part 2 Breaks and Lunch per NASEMSO Meeting Program</p> |
| 10:15 am to 4:30 pm Venice 4 (Hotel) | <p>EMSC Coordinators Council Meeting, Part 2 Breaks and Lunch per NASEMSO Meeting Program</p> |
| 10:15 am to 11:30 am Pavilion Rooms A-B | <p>Emergency Responder Credentialing <i>Peggy Trimble, Chair, FEMA EMS Working Group</i> This session will provide the opportunity to review and discuss federal resource typing activities as well as implementation recommendations pertaining to emergency responder credentialing and the new NIMS Guide 002—National Credentialing Definitions and Criteria</p> |
| 11:30 am to 1:00 pm Pavilion Room D-E-F | <p>EXHIBITS OPEN Strolling Lunch in Exhibit Hall</p> |
| 1:00 pm to 2:15 pm Pavilion Rooms A-B | <p>PANEL DISCUSSION: EMS Education Agenda Standards – <i>Deb Cason, Principal Investigator, NEMSES</i> Implementation – <i>Dan Manz (VT), Chair, NASEMSO Implementation WG</i> Accreditation of Paramedic Programs – <i>Randy Kuykendall (CO), State EMS Director</i></p> |

WEDNESDAY, September 24 2008 - Continued

| | |
|--|---|
| 2:15 pm to 3:00 pm Pavilion Room D-E-F | EXHIBITS OPEN Break in the Exhibit Area with Door-Prize Drawings |
| 3:00 pm to 3:15 pm Pavilion Rooms A-B | Special Report – Air Medical Safety Issues <i>Eileen Frazer, Executive Director, CAMTS</i> An update will be provided on several air medical safety issues, including some activity involving state requirements and recent legal decisions. |
| 3:15 pm to 3:45 pm Pavilion Rooms A-B | Results of the National EMS Workforce Assessment <i>Drew Dawson, NHTSA Office of EMS</i> This session includes a presentation of the results of the National EMS Workforce Assessment conducted by UCSF and provides the audience an opportunity to ask questions and gain information related to the development of the EMS Workforce Agenda for the Future. |
| 3:45 pm to 4:30 pm Pavilion Rooms A-B | Intelligent Transportation Systems and EMS System Data Integration for Safety, Emergency, and Crisis Response Planning <i>Dr. Thomas Horan, Executive Director, Claremont Information and Technology Institute (CITI)</i> Dr. Horan will discuss this UM research project examining the linkages between ITS systems and the Strategic Highway Safety Plans, focusing on the role of ITS and emergency medical services (EMS) to provide timely and visually oriented safety data for system performance improvement and informed decision making. It will also consider how these systems might be adapted to the context of emergency/crisis planning. |
| 5:00 pm to 8:00 pm Venice 2-3 (Hotel) | NREMT Forum State EMS Directors, State Medical Directors, and State Training Coordinators Only <i>Sponsored by the National Registry of EMTs</i> |
| 8:00 pm to 10:00 pm Turcello/Burano (Hotel) | NAEMSO Hospitality <i>Sponsored by Air Evac Lifeteam</i> |

THURSDAY, September 25, 2008

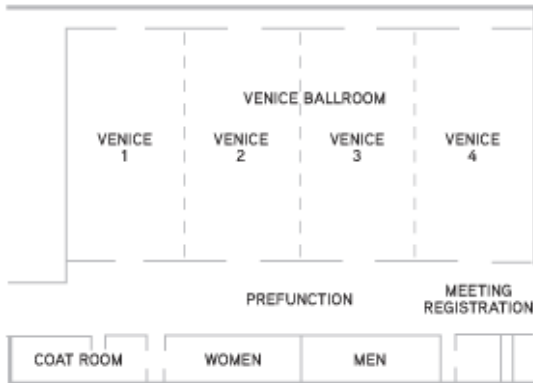
| | |
|---|---|
| | Breakfast on your own |
| 7:00 am to 8:30 am Venice 2 (Hotel) | State EMS Directors Networking Forum This annual session is provided for State EMS Directors to share thoughts, problems, ideas, and solutions in a professional networking discussion. Breakfast will be served in this "BY INVITATION ONLY" event. <i>Sponsored by Elsevier</i> |
| 7:00 am to 5:00 pm Pavilion Rotunda | Registration |
| 8:30 am to 9:00 am Pavilion Rooms A-B | Nominations from the Floor 2008-09 NASEMSO President-Elect, Secretary, and Treasurer |
| 8:30 am to 5:00 pm Turcello/Burano (Hotel) | Data Managers Council Meeting, Part 3 |
| 8:30 am to 5:00 pm Pavilion Room F | Trauma Managers Council Meeting, Part 3 |
| 8:30 am to 5:00 pm Pavilion Room E | Training Coordinators Council Meeting, Part 3 |
| 8:30 am to 5:00 pm Venice 4 (Hotel) | EMSC Coordinators Council Meeting, Part 3 |
| 9:00 am to 9:45 am Pavilion Rooms A-B | Federal Partner Updates <ul style="list-style-type: none"> ✚ DOT NHTSA Office of EMS – Drew Dawson, Director ✚ CDC Division of Injury Response – Tentative ✚ HRSA EMS for Children Program – Tina Turgel, Nurse Consultant ✚ DHS Office of Health Affairs – Dr. Jon Krohmer, Deputy CMO |
| 9:45 am to 10:00 am Pavilion Rooms A-B | Special Report--NHTSA/Johns Hopkins University EMS Systems Study <i>Dr. Robert Bass, NASEMSO Immediate Past President and Anthony Carlini</i> This session will discuss the results of a pilot project and survey from the Mid-Atlantic States identifying characteristics of EMS systems. Input from state directors will be requested. |
| 10:00 am to 10:30 am Pavilion Rooms A-B | Committee Reports and Discussion of Priority Issues <ul style="list-style-type: none"> ✚ Domestic Preparedness-Joe Schmider (PA) ✚ Government Affairs-Robert Waller (KS) ✚ Rural EMS-Jim DeTienne (MT) ✚ Communications and Technology-Shawn Rogers (OK) |
| 10:30 am to 10:45 am Rotunda | Break |
| 10:45 am to 12:00 pm Pavilion Rooms A-B | Council Reports and Discussion of Priority Issues <ul style="list-style-type: none"> ✚ Training Coordinators – Joel Bunis (AZ) ✚ Trauma Managers – Clay Odell (NH) ✚ Data Managers – Stephanie Daugherty (FL) ✚ Medical Directors – Keith Wesley, MD (MN) ✚ EMSC Coordinators – Gloria Hale (NC) |

THURSDAY, September 25, 2008 - Continued

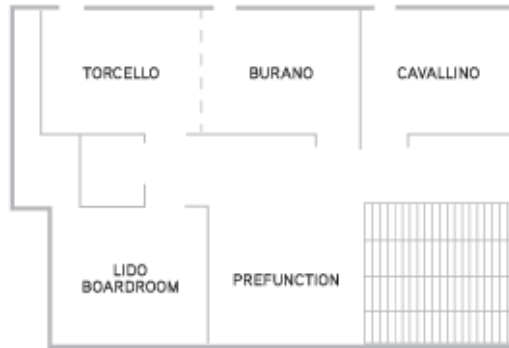
| | |
|--|---|
| 12:00 pm to 1:15 pm Pavilion Room D | Lunch Candidates for NASEMSO Officer positions will introduce themselves and provide a brief statement. <i>Lunch Sponsored by Med-Media, Inc.</i> |
| 1:15 pm to 5:00 pm Pavilion Rooms A-B | NASEMSO Annual Business Meeting <ul style="list-style-type: none"> 2008 Resolutions 2011 Annual Meeting Site Selection Elect 2008-2009 President-Elect, Secretary, Treasurer NASEMSO Project Updates Other Business |
| 5:00 pm | Adjournment |

HOTEL MURANO FLOOR PLAN

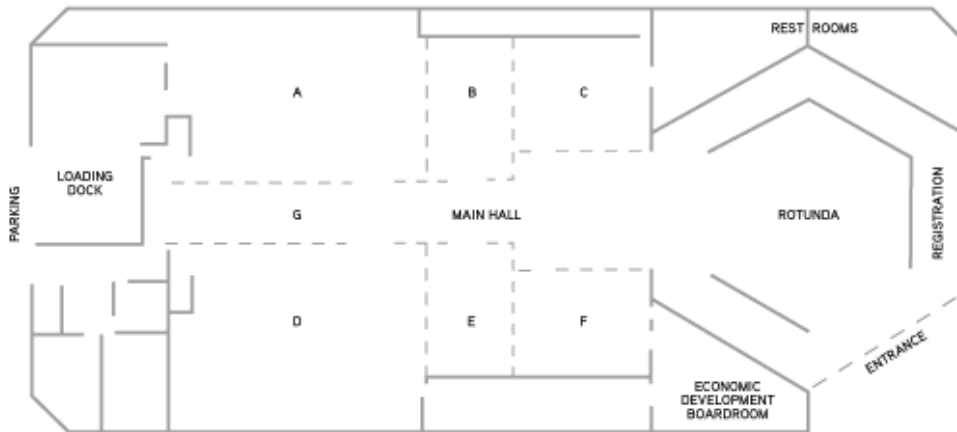
FIRST FLOOR



THIRD FLOOR



BICENTENNIAL PAVILION FLOOR PLAN



Meeting Notes

NASEMSO

On-site Meeting Office is located in the Economic Development Room (Bicentennial Pavilion). A photocopier, computers and a printer are available for NASEMSO attendee use (complimentary).

Visit the Exhibits:
Pavilion D-E-F
Exhibits are on display
Tuesday, 5:30 p.m.
until
Wednesday, 3:00 p.m.

Casual attire
for all programmed events!

NASEMSO gratefully acknowledges our 2008 Annual Meeting sponsors:

