



EDUCATION STANDARDS

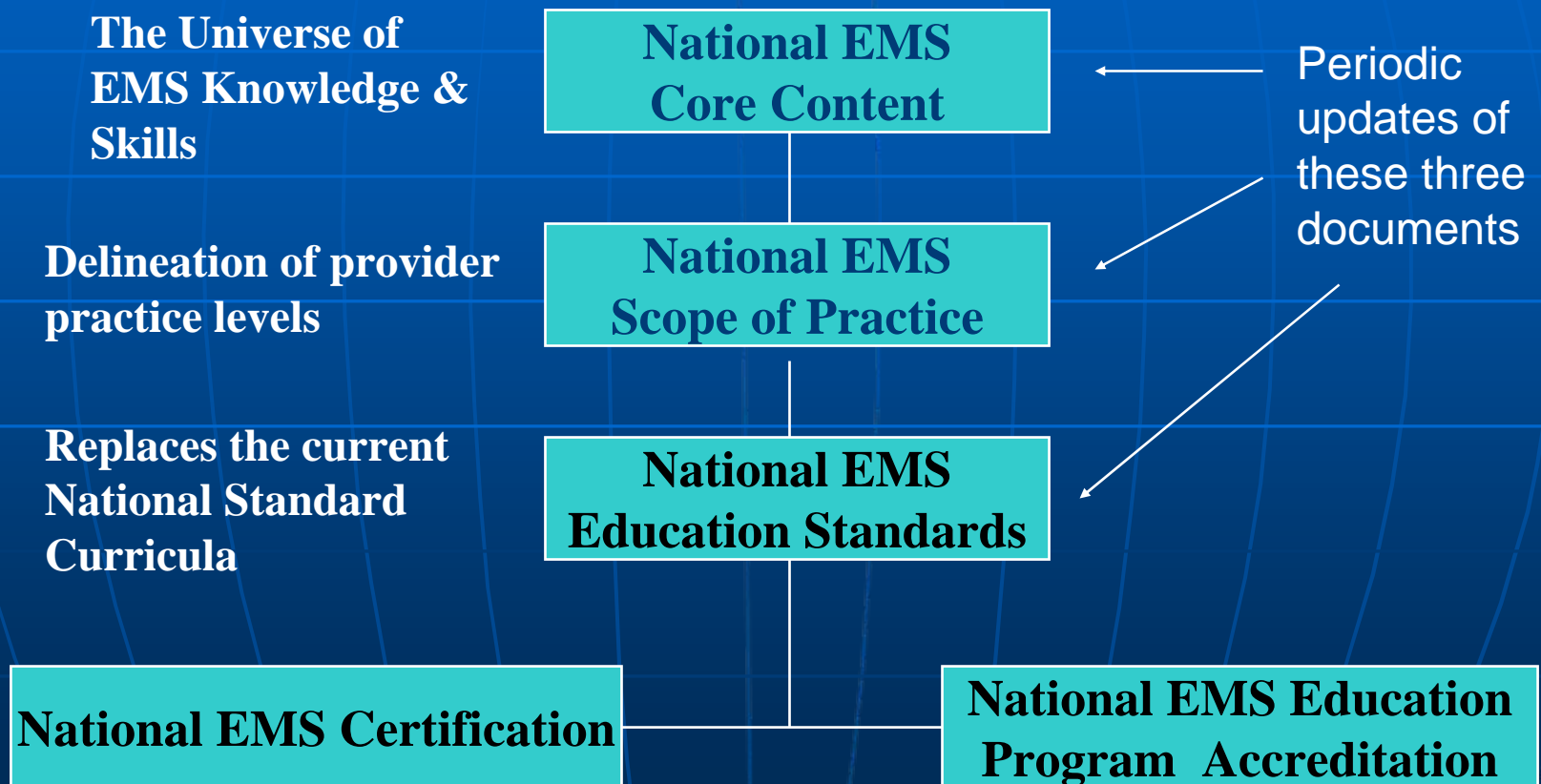
June, 2007

NHTSA & HRSA (EMS-C)
contract with

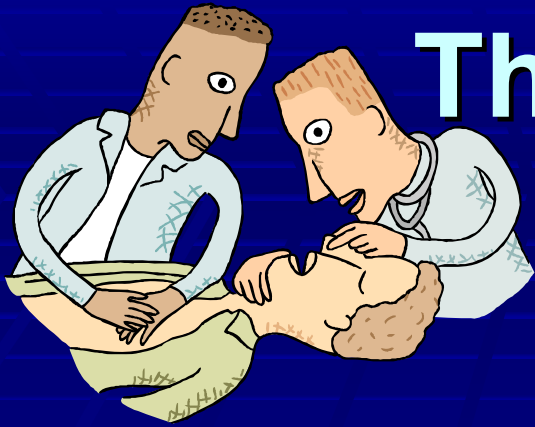


The National Association of EMS Educators

The EMS Education Agenda for the Future: A Systems Approach



A single agency for each function- Standard exam, minimum competence, consumer protection



The Emergency Medical Responder

- Very similar to today's First Responder
- Focus: **immediate lifesaving** care to **critical patients**
- Skills: Oxygen, BVM, suction, oral airways, AED.

Emergency Medical Technician



- *Very similar to today's EMT-Basic*
- Focus: basic emergency medical care and **transportation for critical and emergent patients**
- Skills: pulse ox, assisted meds, oral glucose, ASA.

Advanced EMT



- **Focus:** **basic and *limited* advanced care**
- **Skills:** **Combitube, IV/IO, NTG, Epi 1:1000, glucagon, D50, β 2 agonists, narcans, N_2O_2**

Paramedic



- *Very similar to today's EMT-Paramedic*
- Focus: **advanced** emergency medical care and transportation for **critical and emergent** patients
- Skills: CPAP, Capnography, 12 Lead interp, thrombolytics, PAI, Blood chemistry analysis, etc.

Education Standards

Replace NCS

Encourage creativity,
alternative delivery
methods

Are broad

Identify the necessary
depth of content



AND

Instructional Guidelines



- Companion document to Education Standards
- More specific & with “key knowledge points”, “essential skills”, and “elaboration”

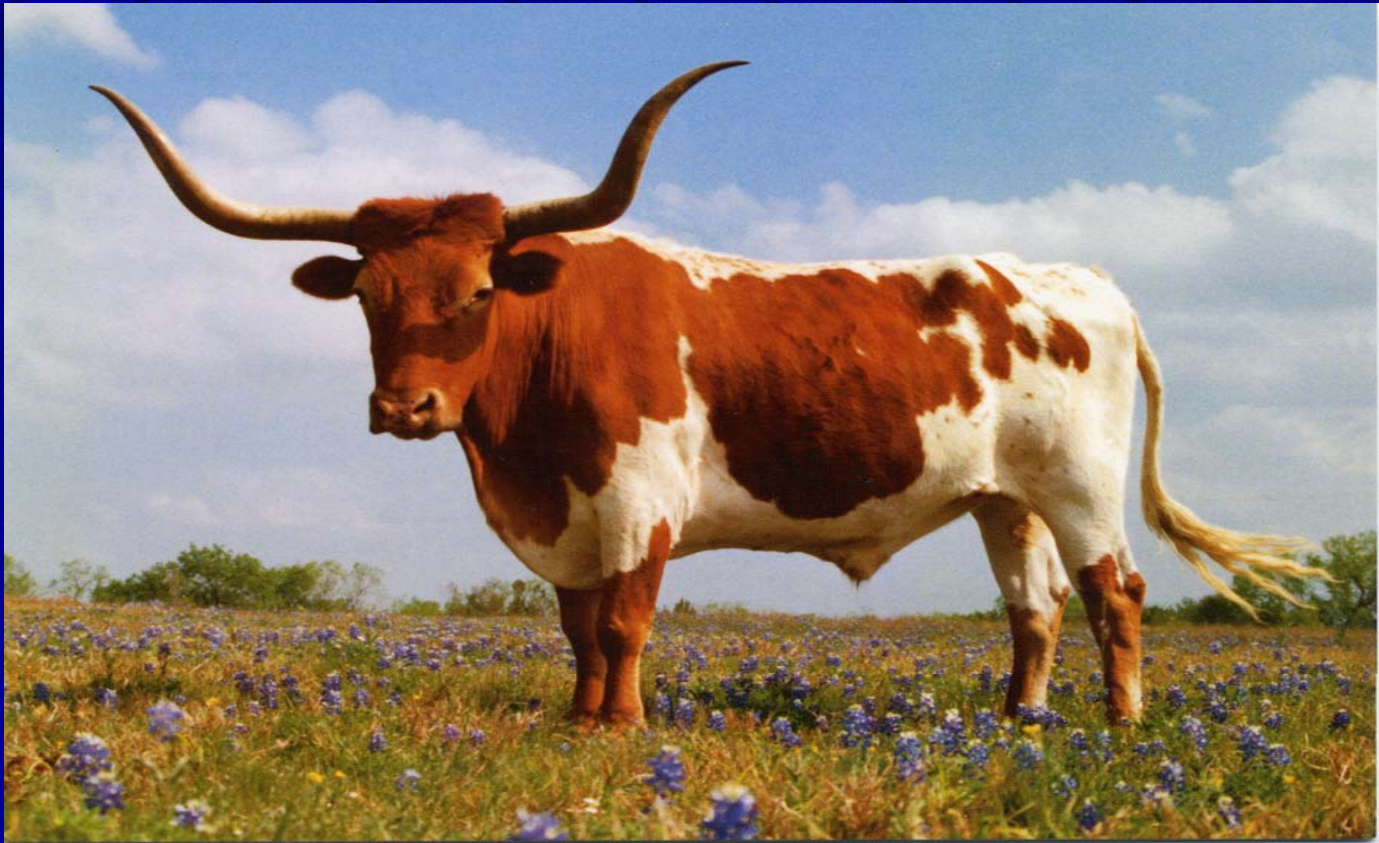
INSTRUCTIONAL GUIDELINES

- NOT part of the Education Standards
- More specific—subject to becoming outdated
- Includes outline of content
- NOT to be construed as required Education Standards



MEDICAL ADVISOR

Ed Racht, M.D.



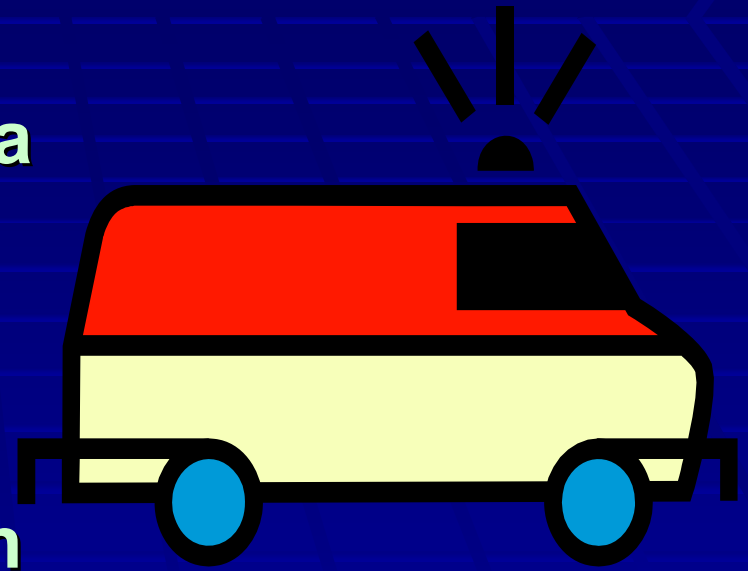
Provider Levels

**Emergency Medical
Responder —Kim McKenna**

EMT – Mike O’Keefe

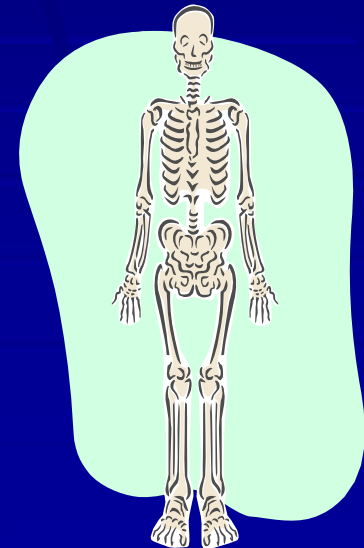
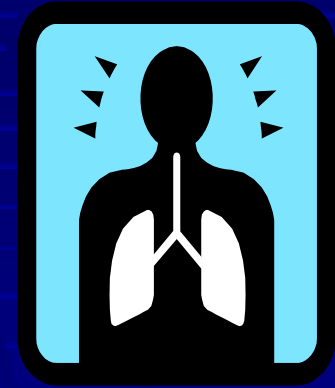
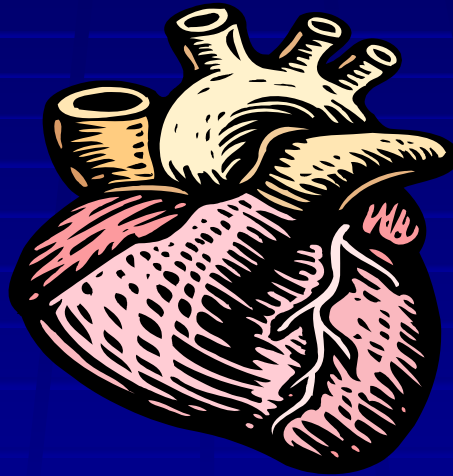
**Advanced EMT – Pauline Van
Meurs**

Paramedic – Gregg Margolis



Content Sections

- * Preparatory
- * Airway
- * Assessment
- * Resuscitation
- * Cardiology
- * Trauma
- * Medical
- * Special pts
- * Ops
- * Educational Infrastructure



Peds is integrated



So what do these draft **EDUCATION STANDARDS** look like?

For each provider level, a list of

- **COMPETENCIES**
- Knowledge required
- **Clinical behavior and judgment**
- Ed Infrastructure



Provider levels side by side

EMR	EMT	AEMT	PARA
Competency	Competency	Competency	Competency
Knowledge to achieve	Knowledge to achieve	Knowledge to achieve	Knowledge to achieve
Clinical behaviors	Clinical behaviors	Clinical behaviors	Clinical behaviors
Ed Infrastructure	Ed Infrastructure	Ed Infrastructure	Ed Infrastructure

GLOSSARY ISSUE

“EMT” is specific to that provider level, NOT generic!

“EMS Personnel” or “EMS Provider” is the generic term



Draft 1.0

- **Medical direction for all levels**
- **Student evaluation in all domains, all levels**



Draft 1.0



**Use of traditional patient
assessment terminology**

**Patient contacts included
for EMT and above**

**Course length = competency
based**

WARNING

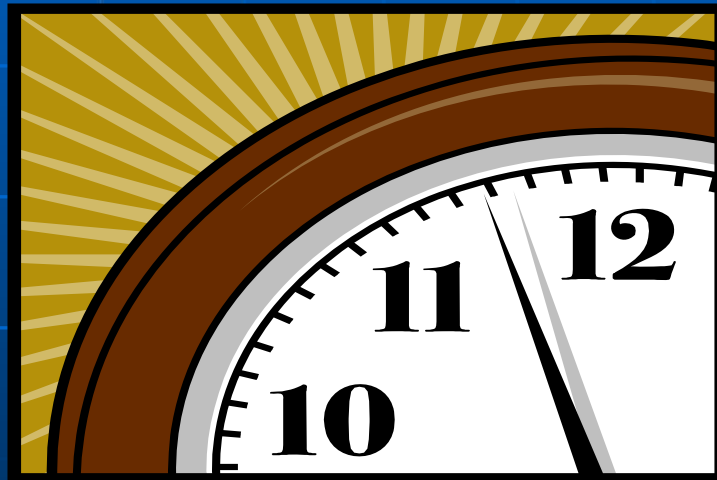
Viewer discretion advised!

The next slide contains material that may be offensive to small children, medical directors, fire chiefs, and service administrators...



EMT length: APPROX
166 – 198 hrs

Presumes
"AVERAGE"



“AVERAGE”

- Talk fast!
- 2nd year med students?
- 1st year Emergency Med residents?
- Certified respiratory therapists?
- H.S. class?
- Academic background?
- Motivation?

DRAFT 1.0

- More pathophysiology included for **EMT—AIRWAY, VENTILATION, OXYGENATION, SHOCK, BLEEDING, RESPIRATORY DISTRESS**



EMT CLASSES

- NOT necessarily all “seat time”



- Includes CPR, skills labs, testing in all domains, patient contact time, NIMS, Haz Mat orientation

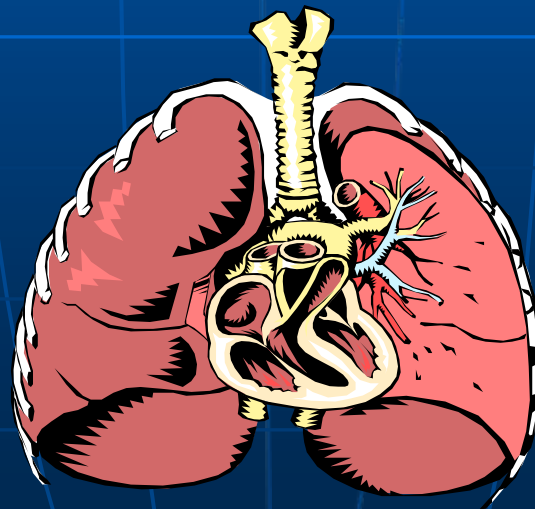
Draft 1.0

What do we do about ambulance operations?



EMR Draft 1.0

- 48-52 hrs
- More info on anaphylaxis, airway, GI bleeding, diabetic emergencies, poisoning and chest pain



AEMT Draft 1.0

- **ESTIMATED 140 – 166 additional hrs over EMT**
- **More info related to background for skills**
- **Requires patient contacts**

PARAMEDIC Draft 1.0

- Ed Infrastructure references
CoAEMSP standards for
paramedic level

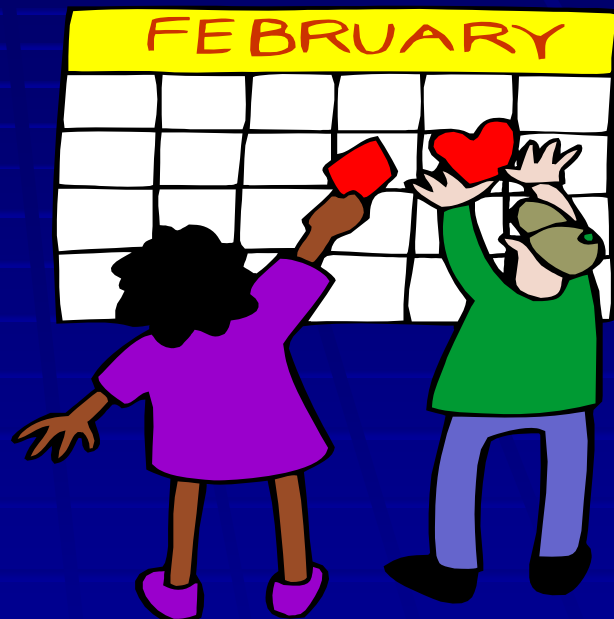


CoAEMSP.org

- Program director: full time, bachelor's degree
- Sponsorship: academic institution must be a consortium member
- Curric: 1000-1300 hrs
- Adequate clinical resources
- Ongoing program eval

TIME LINE

- Oct '05 --began
- Oct – April '06 --
Organized
participants and
process
- May '06 --First
National
Stakeholders Mtg



- **May '07- June –1st draft of Ed Standards & IG**
- **May – July '07—receive input on 1st drafts**
- **Sept 07—2nd drafts for all levels**

- **Sept '07 – Jan '08—receive input on 2nd drafts**
- **Feb' 08—Second Stakeholders meeting**
- **April '08—3rd draft**
- **Aug '08—Deliver to NHTSA**

WE MUST UNDERSTAND:

- For the Education Agenda system to work to improve EMS education, ALL components must work together-- Including national accreditation and national certification!



WEBSITE

- WWW.NEMSES.org

National EMS Ed Standards.org

Did I mention this is a ...

DRAFT

Debra.cason@UTSouthwestern.edu

QUESTIONS?